

xiaomi

Xiaomi Vacuum Cleaner G11 Battery Pack User Manual



Safety Instructions

Read this manual carefully before use, and retain it for future reference.

- Do not disassemble, strike or crush the battery pack or throw it into fire.
- Stop using the battery pack immediately if there is any swelling or fluid leakage.
- Do not expose the battery pack in a high-temperature environment.
- If you come into physical contact with any substance that may leak out of the battery pack, rinse the contact area with plenty of water and seek medical attention immediately.
- Do not dismantle, open or shred secondary batteries.
- Do not expose batteries to heat or fire. Avoid storage in direct sunlight.
- Do not short-circuit a battery. Do not store batteries haphazardly in a box or drawer where they may short-circuit each other or be short-circuited by other metal objects.
- Do not remove a battery from its original packaging until required for use.
- Do not subject batteries to mechanical shock.
- In the event of a battery leaking, do not allow the liquid to come in contact with the skin or eyes. If contact has

- been made, wash the affected area with copious amounts of water and seek medical advice.
- Do not use any battery which is not designed for use with the equipment.
 - Keep batteries out of the reach of children. Battery usage by children should be supervised.
 - Always purchase the battery recommended by the device manufacturer for the equipment.
 - Keep batteries clean and dry.
 - Wipe the battery terminals with a clean dry cloth if they become dirty.
 - After extended periods of storage, it may be necessary to charge and discharge the batteries several times to obtain maximum performance.
 - Storage Temperature: -20°C to 25°C
 - Storage Humidity: 20%–75%
 - Secondary batteries need to be charged before use. Always use the correct charger and refer to the manufacturer's instructions or equipment manual for proper charging instructions.
 - Charging Precaution: Use only with BLJ24WD260090P-V/B supply unit to charge at an ambient temperature of 7°C to 35°C.
 - Do not leave a battery on prolonged charge when not in use.

- Do not immerse in water pour.
- Do not attempt to crush or drop.
- Do not drive a nail in, hit with a hammer, or stamp on the battery.
- Dispose of properly. Retain the original product literature for future reference.

Note: Illustrations of product, accessories, and user interface in the user manual are for reference purposes only.
Actual product and functions may vary due to product enhancements.

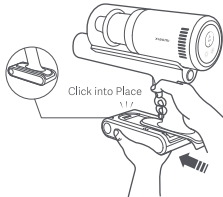


How to Install

Installing the Battery

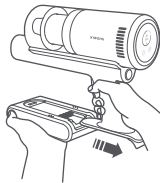
Slide the vacuum cleaner along the battery track until it clicks into place.

Note: After installing the battery, press the power button to turn on the vacuum cleaner.



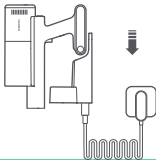
Removing the Battery

Hold the vacuum cleaner in one hand and grasp the battery in the other hand, then press the battery release button and pull the vacuum cleaner in the direction shown to separate it from the battery.



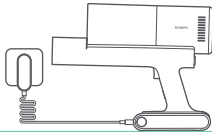
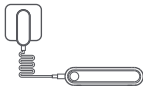
Charging

Charging on the 2-in-1 Charging & Storage Mount



Charging the Vacuum Cleaner with the supply unit

The battery can be charged while installed on the vacuum cleaner, or removed and charged separately.



Battery Status Indicator

● Off

☀ Blinking

○ On



Charging (high battery level)



Fully charged

During Use



Low battery



Half battery



Nearly full

During Charging



Charging (low battery level)



Charging (medium battery level)

Specifications

Name	Battery Pack	Energy	67.71 Wh
Model	MJWXCQ05XYHW-DC	Rated Capacity	3050 mAh
Item Dimensions	165 × 80 × 36 mm	Nominal Voltage	22.2 V =

WARRANTY NOTICE

As a Xiaomi consumer, you benefit under certain conditions from additional warranties. Xiaomi offers specific consumer warranty benefits which are in addition to, and not instead of, any legal warranties provided by your national consumer law. The duration and conditions related to the legal warranties are provided by respective local laws. For more information about the consumer warranty benefits, please refer to Xiaomi's official website <https://www.mi.com/en/service/warranty/>. Except as prohibited by laws or otherwise promised by Xiaomi, the after-sales services shall be limited to the country or region of the original purchase. Under the consumer warranty, to the fullest extent permitted by law, Xiaomi will, at its discretion, repair, replace or refund your product. Normal wear and tear, force majeure, abuse or damage caused by the user's negligence or fault are not warranted. The contact person for the after-sale service may be any person in Xiaomi's authorized service network, Xiaomi's authorized

distributors or the final vendor who sold the products to you. If in doubt please contact the relevant person as Xiaomi may identify.

The present warranties do not apply in Hong Kong and Taiwan.

Products which were not duly imported and/or were not duly manufactured by Xiaomi and/or were not duly acquired from Xiaomi or a Xiaomi's official seller are not covered by the present warranties. As per applicable law you may benefit from warranties from the non-official retailer who sold the product. Therefore, Xiaomi invites you to contact the retailer from whom you purchased the product.

Manufactured for: Xiaomi Communications Co., Ltd.

Manufactured by: Beijing Shunzao Technology Co., Ltd.
(a Mi Ecosystem company)

Address: 101, 1st floor, Building1, No.16, Anningzhuang East Road, Haidian District, 100089 Beijing,
PEOPLE'S REPUBLIC OF CHINA

For further information, please go to www.mi.com

Importer:

Beryko s.r.o.

Pod Vinicemi 931/2, 301 00 Plzeň

www.beryko.cz



User Manual Version: V1.0